

Workshop on Disentangling the Drivers of Migration in West Africa

Thursday, 13 February, 1:00-4:30pm

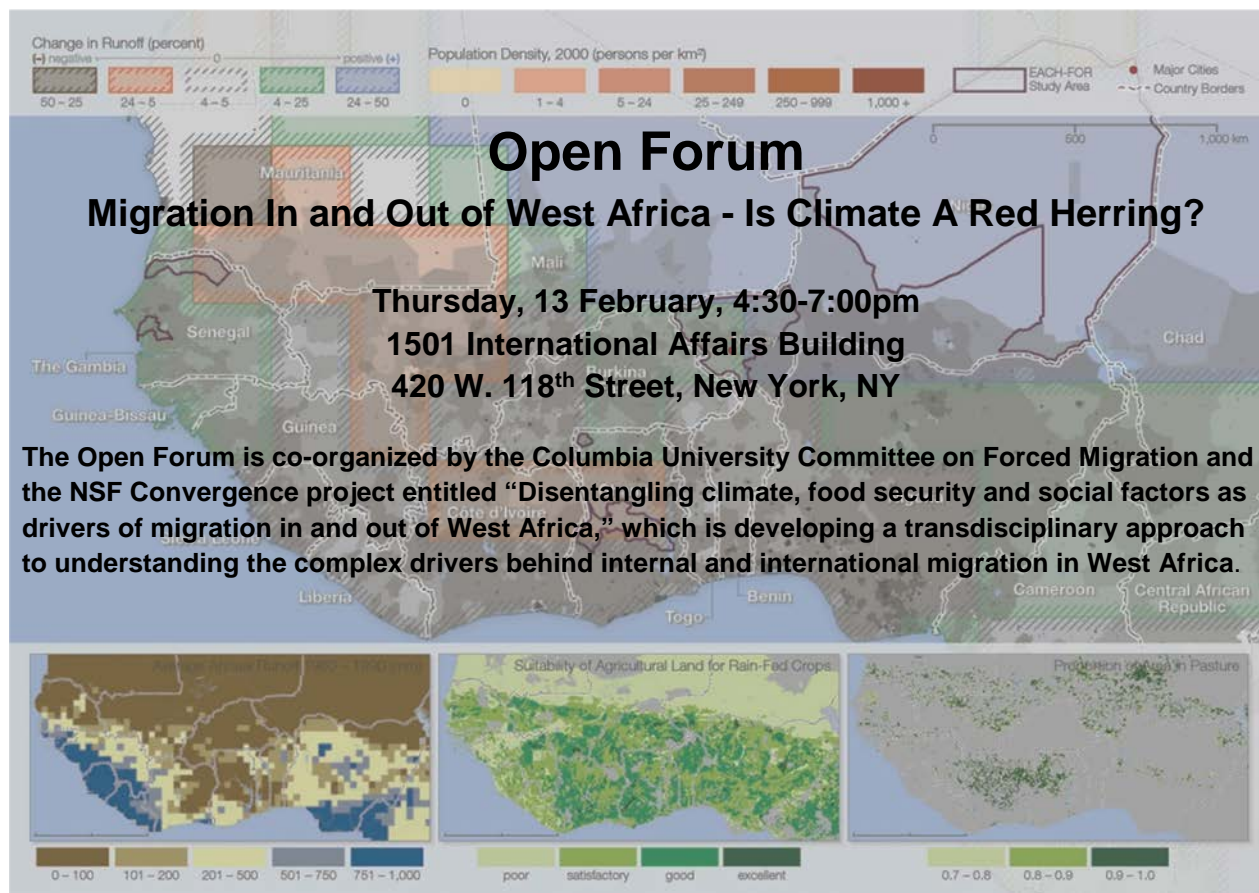
1501 International Affairs Building

420 W. 118th Street, New York, NY

This workshop is being organized in the context of the recently funded NSF Convergence project entitled “Disentangling climate, food security and social factors as drivers of migration in and out of West Africa,” which is developing a *transdisciplinary* approach to understanding the complex drivers behind internal and international migration in West Africa. The goal is to learn about the current climate and migration trends and research on environmental and other drivers of migration, and to engage in an open discussion

To participate in the afternoon workshop from 1:00-4:15pm, please register here: <https://bit.ly/2GTmoXP>
(note: if you also want to participate in the Open Forum you will need to register separately below)

1:00-1:15	Welcome and Introduction (Richard Seager, project PI)
1:15-2:00	Setting the Stage (Chair: Sonali McDermid, NYU) Presentations: <ul style="list-style-type: none">- Migration Dynamics in West Africa (Damien Jusselme, IOM)- Climate Dynamics and Future Projections in West Africa (Richard Seager and Michela Biassuti, Lamont-Doherty Earth Observatory)- Q&A / discussion
2:00-3:00	Research Findings on Environmental Migration (Chair: Andrew Bell, NYU) Presentations: <ul style="list-style-type: none">- Longitudinal Analysis of Rainfall and Out-Migration in Southeast Mali (Kathryn Grace, University of Minnesota)- Environmental Migration in West Africa with Case Study Findings from Northern Ghana (Kees van der Geest, United Nations University-Environment and Human Security)- Findings from the Migration between Africa and Europe Project (Marie-Laurence Flahaux, Institut de Recherche pour le Développement)- Q&A / discussion
3:00-3:15	Coffee Break
3:15-4:15	Cross Cutting Perspectives and Methods (Chair: Michael Puma, Columbia) Presentations: <ul style="list-style-type: none">- Gendered Dimensions of Migration (Cheryl Doss, Oxford University)- The Challenges Faced by Non-Migrants (Sally Findley, Columbia University)- Agent Based Modeling for Research on Environmental Migration (Barbara Entwisle, University of North Carolina)- Q&A / discussion
4:15-4:30	Break before the Open Forum



Map Source: CARE, UNU, and CIESIN.2009. *In Search of Shelter*.

Advance registration required. To attend the Open Forum, please register here: <https://bit.ly/3b7ktwG>

4:30-6:00	<p>Welcome: Richard Seager, Lamont Doherty Earth Observatory, Columbia University Chair: Wolfram Schlenker, Columbia School for International and Public Affairs (SIPA)</p> <p>Keynote Talks</p> <ul style="list-style-type: none"> - Household Livelihoods, Climate Factors and Migration in and Out of Senegal (Papa Faye, Centre d'Action pour le Développement et la Recherche, Senegal) - The Social Consequences of Environmental Migration in Africa (Valerie Mueller, Arizona State University) - Climate-induced Migration in West Africa: Findings from the WASCAL Project (Aly Mbaye, Université Cheikh Anta Diop, Dakar, Senegal) <p>Panel Discussion</p> <ul style="list-style-type: none"> - Moderator : Alex de Sherbinin, CIESIN, The Earth Institute at Columbia - Papa Faye, Valerie Mueller, Aly Mbaye, Damien Jusselme (International Organization for Migration), Jesse Ribot (American University) <p>Open Discussion between panelists and the audience</p>
6:00-7:00	Reception