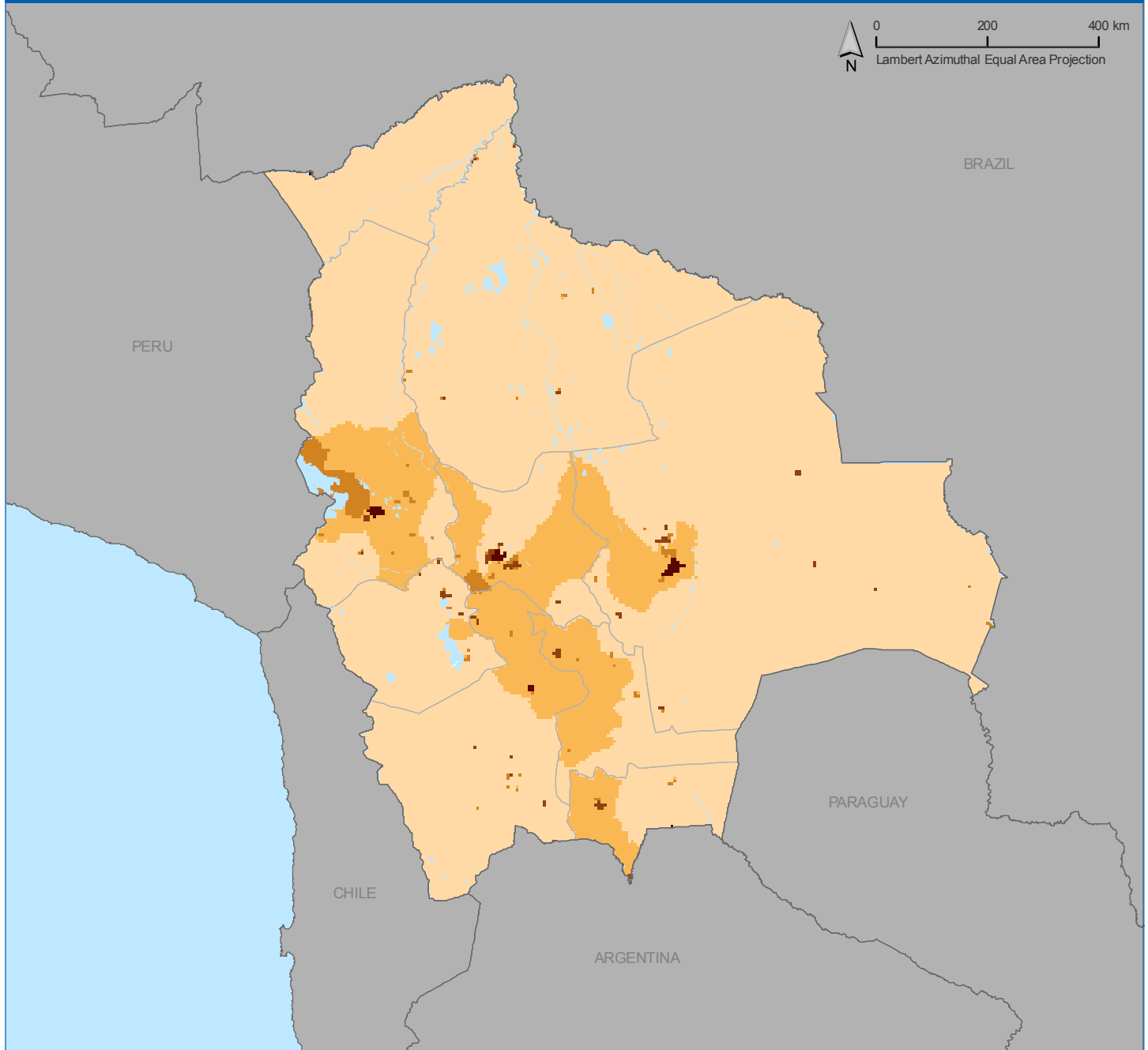


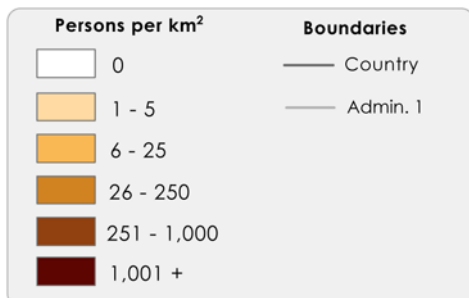
POPULATION DENSITY, 2000

Bolivia

GRUMP_{v1}



Global Rural-Urban Mapping Project



Population density measures the number of persons per square kilometer of land area. The data are gridded at a resolution of 30 arc-seconds.

Note: National boundaries are derived from the population grids and thus may appear coarse.



Copyright 2009. The Trustees of Columbia University in the City of New York. Center for International Earth Science Information Network (CIESIN), Columbia University, International Food Policy Research Institute (IFPRI), the World Bank, and Centro Internacional de Agricultura Tropical (CIAT). Global Rural-Urban Mapping Project (GRUMP), Population Density. Palisades, NY: CIESIN, Columbia University. Available at: <http://sedac.ciesin.columbia.edu/gpw/>



This document is licensed under a Creative Commons 3.0 Attribution License <http://creativecommons.org/licenses/by/3.0/>